



YOUR PATIENTS RELY ON **YOU**.
YOU CAN RELY ON **US**.

Vivid™ T9

ULTRA EDITION



gehealthcare.com/vivid

Vivid™ T9

ULTRA EDITION



Designed for your busy practice, Vivid T9 Ultra Edition provides reliable and ergonomic design, powered with AI applications for extreme productivity without compromising quality of care.⁷

Enjoy long-term peace of mind with modern and secure software design, remote updates, and warranty coverage.



7 - The Role of AI in Streamlining Echocardiography Quantification White Paper, Kristin McLeod, Jurica Sprem JB20789XX. Ultra Edition is not a product name; it refers to the 2022 release of the Vivid portfolio.

Vivid T9 Ultra Edition Customer Presentation

MODERN ERGONOMICS YOUR NEEDS. OUR DESIGN.

**Sleek design with
an intuitive user
interface.**

21.5" ultra-high-resolution,
wide format, color screen

Articulating
monitor arm

10.1" high-resolution touch panel

Ergonomic transport push handle

Cable management hooks

Compact and maneuverable design

A lightweight (60 kg / 132 lbs)
system with compact footprint



Convenient operating panel with
integrated alphanumeric keyboard

Single-hand push button
for up/down and left/right swivel
adjustment.
Perfect for sitting and standing position

B&W and video printer and printer
shelf (optional)

Removeable and cleanable storage bin

Eco-friendly design

Extremely silent system (average noise level
of 31 dB)

Black & white inverted printing, preventing
waste of ink and paper

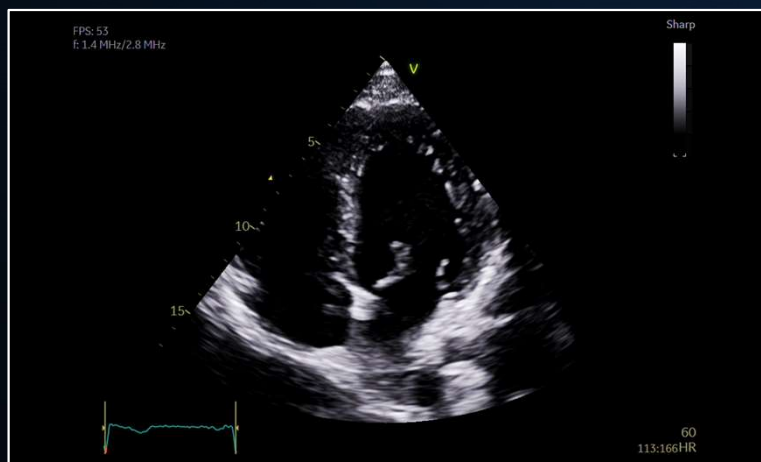
Large wheels for easy system transport



Vivid T9 Product Highlights

IMAGE QUALITY

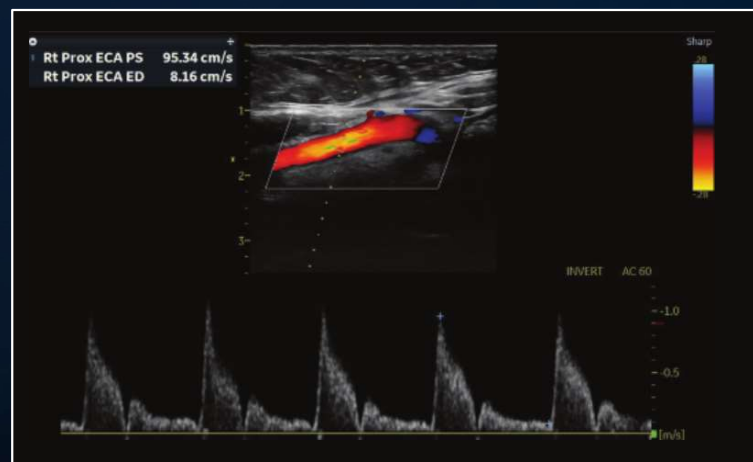
YOUR VISION. OUR SUPERB IMAGES.



Penetration QuickApp

Helps improve visibility

Optimizes penetration in technically difficult studies with one click.



L4-20t-RS Single Crystal Linear Probe⁸

Beautifully clear vascular imaging

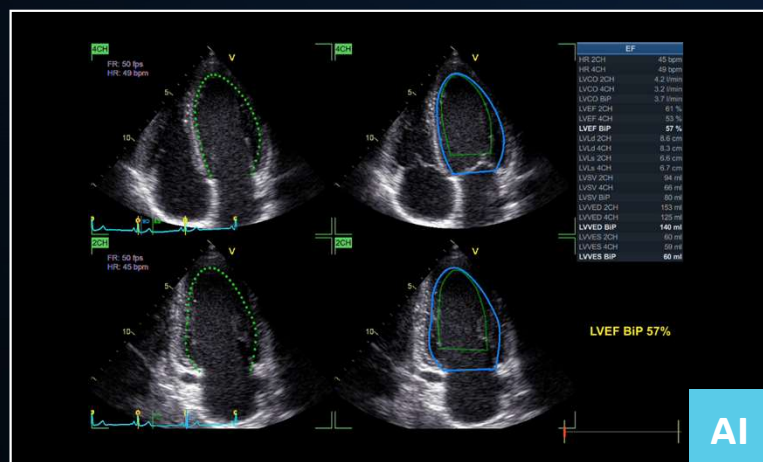
Four configurable control buttons allow you to ergonomically position yourself at the bedside, performing essential functions such as Freeze, Store, mode switch, among other functions, away from the scanner.

EXTREME PRODUCTIVITY

YOUR TIME. OUR WORKFLOW TOOLS.



LATEST INNOVATIONS

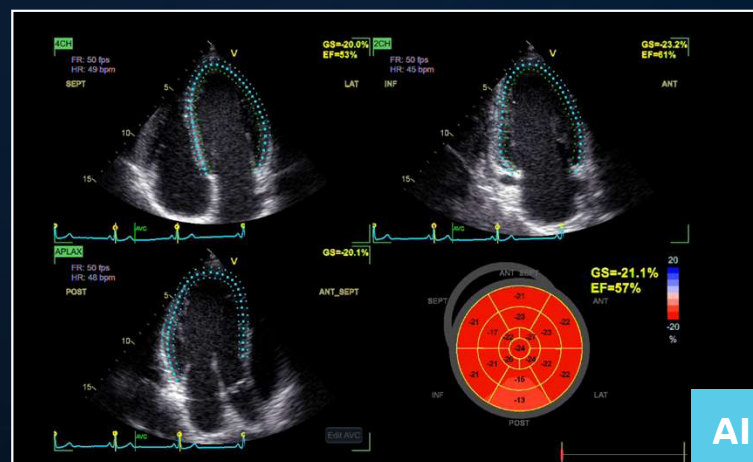


Easy AutoEF⁹

Our AI-based Auto ROI detection algorithm allows users to measure ejection fraction, with no manual interaction apart from initiating the tool and approving the results.



EF results in just 1 click⁷



Easy AFI LV with View Recognition

Our AI-based global and segmental strain measurements require no manual interaction apart from initiating the tool and approving the results. Additionally, you will be able to view EF measurements.



Strain results in 15 seconds (on average)¹⁰

7 - The Role of AI in Streamlining Echocardiography Quantification White Paper, Kristin McLeod, Jurica Sprem JB20789XX

9 - Easy AutoEF is restricted for use with adult TTE on GE Healthcare raw B-mode dataloops of the LV. Easy Auto EF does not support left ventricles with septal bulge

10 - Time to strain measurement result may vary with heart rate, frame rate and Vivid system. Verification of performance done by GEHC clinical application specialists using Vivid system (DOC2739637)



... and what do the
experts say?

CUSTOMER FEEDBACK ON LATEST RELEASE



Extreme Productivity

“*The Vivid T9 Ultra Edition AI-based automated measurements help my staff complete a standard echo exam faster, and with less variability. The new Penetration button on the touch screen helps give the sonographers the extra boost we often need with challenging imaging windows. As a busy private cardiology practice, we appreciate having these advanced options available on an affordable cardiovascular ultrasound system”*

– Dr. Adurthy Ananth Shankar, MD

Director Cardiovascular division
Essen Healthcare, New-York, USA

Image Quality

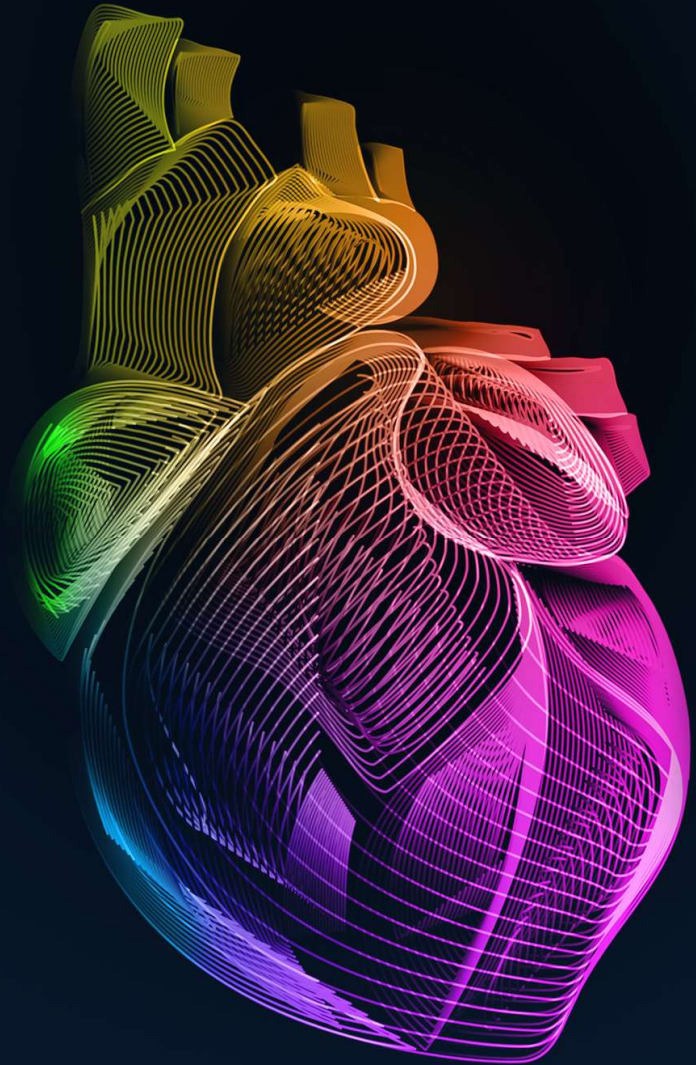
“*With Vivid T9 you can achieve an accurate diagnosis with confidence in any cardiac pathology.”*

– Dr. Angela López Sainz

Cardiologist
Hospital Clinic in Barcelona

VIVID™ CLINICAL APPLICATIONS

A wide range of clinical applications for use
in Core Echo Lab, Interventional and Pediatrics.



VIVID™ CLINICAL APPLICATIONS

YOUR SKILLS. OUR SUPPORT.

In the core echo lab and even beyond cardiology, smart applications support your know-how.



VISUALIZATION AND NAVIGATION

Curved Anatomical
M-Mode

Blood Flow Imaging

Smart Stress

LVO Contrast

Ultra Edition

Pre-Post
Compare

Strain
Elastography

Scan Coach

FLOW QUANTIFICATION

Ultra Edition

Cardiac Auto
Doppler **AI**

AI Auto Measure
Spectrum
Recognition **AI**

CHAMBER QUANTIFICATION

Ultra Edition

Z-Scores

Easy AutoEF **AI**

AI Auto Measure 2D **AI**

AFI FUNCTIONAL IMAGING

Ultra Edition

Easy AFI LV **AI**

AFI RV

AFI LA

VIVID™ CLINICAL APPLICATIONS



VISUALIZATION AND NAVIGATION

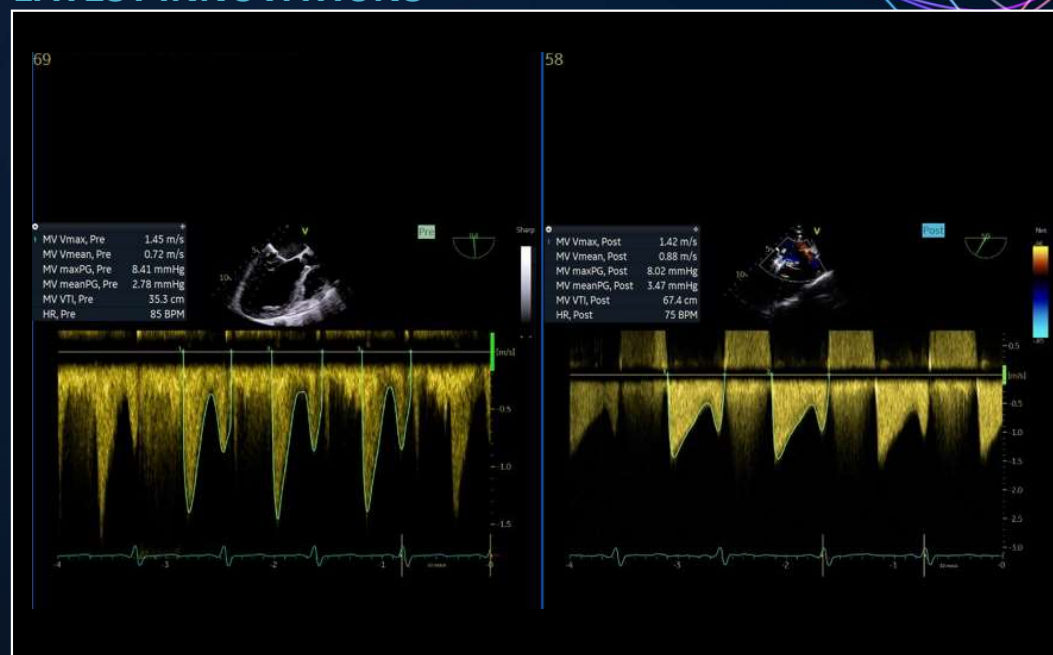
Why guess? When you can see.

PRE-POST COMPARE

Labelling images and measurements with 'Pre' or 'Post' (pre & post repair)

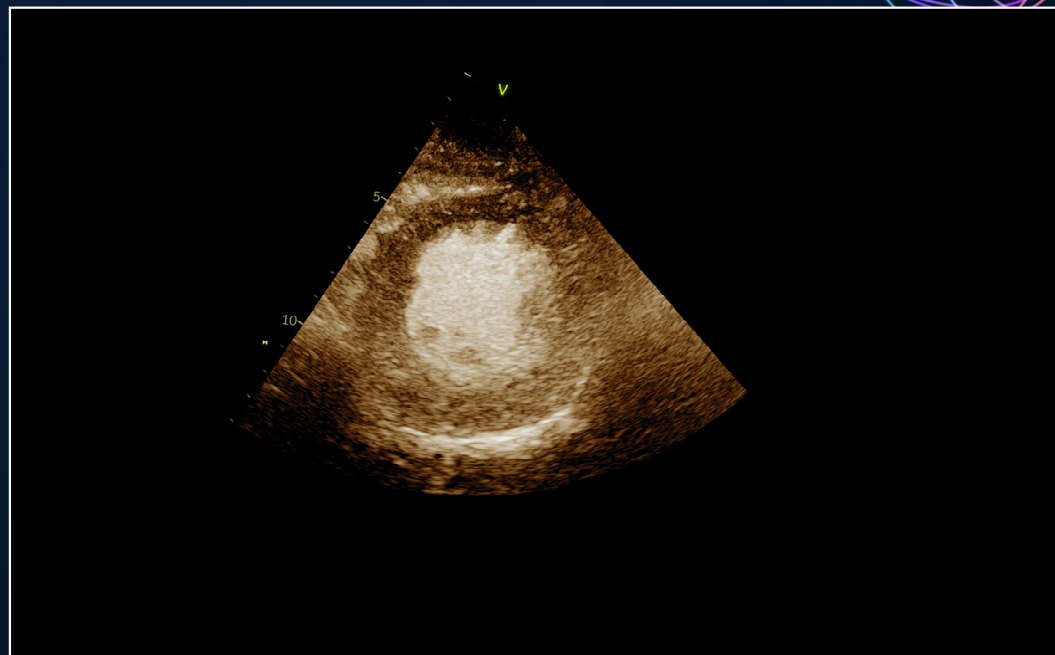
- Allows users to differentiate between measurements done before and after a procedure step
- "Pre" and "Post" tags images are acquired in the upper right corner, when this feature is activated
- Pre and Post measurements will be displayed separately and transferred as two different measurements

LATEST INNOVATIONS



LVO CONTRAST

Benefit from high-resolution detection of contrast in the LV cavity with LVO Contrast and excellent suppression of myocardial tissue signals on the Vivid T9 Ultra Edition new Coded Phase Inversion (CPI).



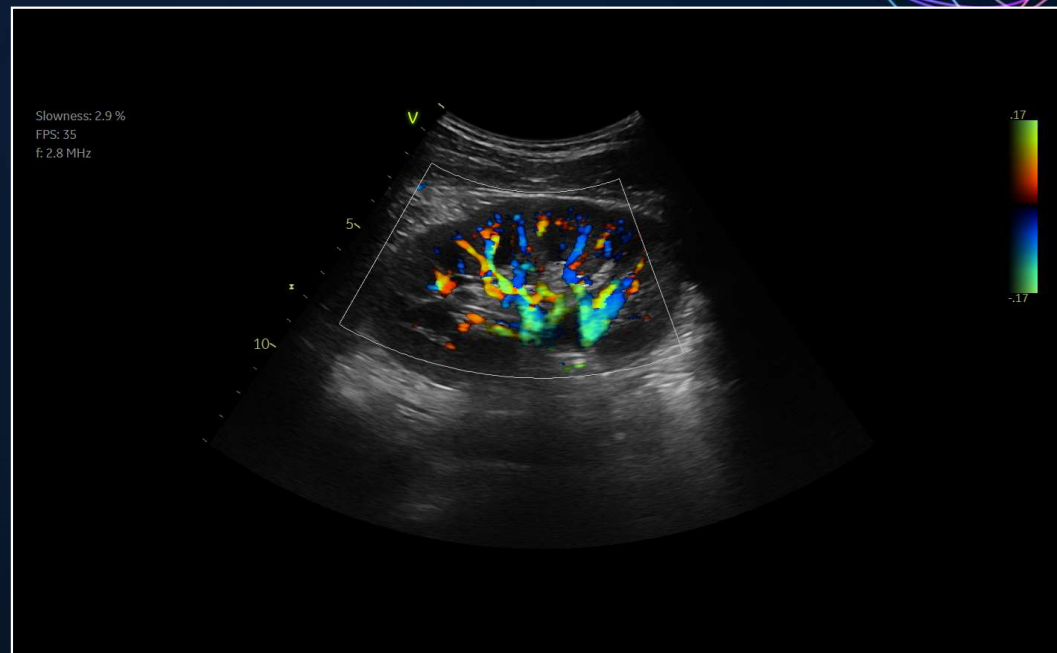
ANATOMICAL M-MODE

View anatomy and tissue velocity in M-mode. Adjust the cursor at any plane, in live imaging or with recalled images.



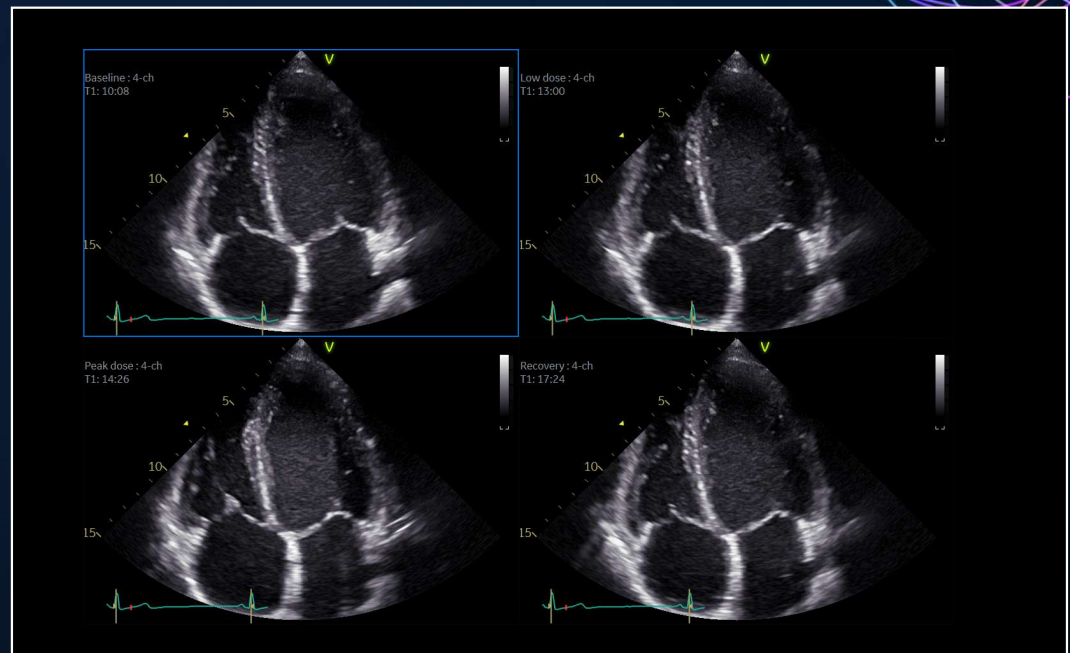
BLOOD FLOW IMAGING

Enhance blood flow dynamics visualization using a signal-processing algorithm for visualizing blood flow data.



SMART STRESS

Over 17 imaging parameters from each plane can be saved and recalled at each stress level, reducing system adjustments during acquisition.



VIVID™ HEART APPLICATIONS



FLOW QUANTIFICATION

Your time is precious. Save it.

AI CARDIAC AUTO DOPPLER

Semi-automatic Cardiac Doppler measurements.

Benefits:

- Enhances reproducibility of follow-up studies when used in automated mode¹²
- Offers Doppler measurement in multiple cardiac cycles as recommended by guidelines for irregular heart rhythms^{13,14}
- Supports less experienced users with advanced automation

REDUCED TIME PER MEASUREMENT

93%

fewer keystrokes¹²

LOWER INTER OPERATOR VARIABILITY

~3x

Standardized exams with greater reproducibility¹²

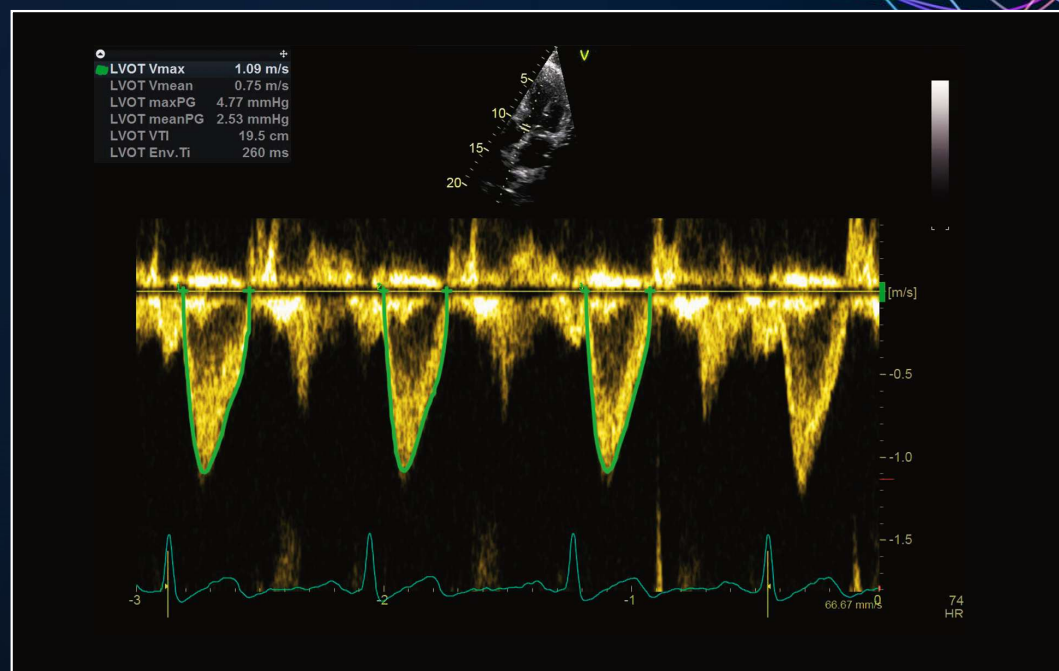
ACCELERATED WORKFLOW

Productivity improvement

12 - Based on results of time and motion study conducted by GE "JB49055XX - Cardiac Auto Doppler"; study results indicated time savings related productivity increase up to ~8 on an annual basis for a facility per sonographer.

13 - European Association of Echocardiography recommendations for standardization of performance, digital storage and reporting of echocardiographic studies (Eur Journal of Echo 2008 - Evangelista, Badano, Monaghan, Zamorano, Lancellotti).

14 - Recommendations for Quantification of Doppler Echocardiography: A Report From the Doppler Quantification Task Force of the Nomenclature and Standards Committee of the American Society of Echocardiography (JASE 2002).



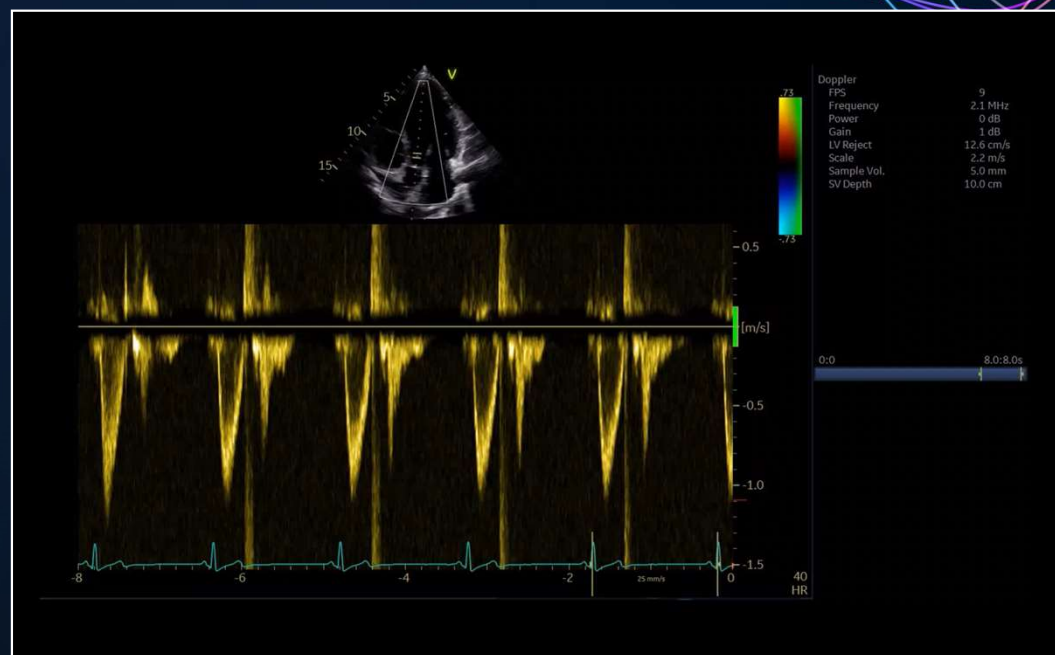


AI AUTO MEASURE SPECTRUM RECOGNITION

Semi-automatic selection of appropriate spectral Doppler measurement tool.

Benefits:

- Enables fewer manual interactions by automatically opening the appropriate measurement tool⁷
- Works seamlessly with Cardiac Auto Doppler
- Enhances reproducibility of follow-up studies when used in automated mode⁷
- Supports less experienced users with advanced automation



⁷ - The Role of AI in Streamlining Echocardiography Quantification White Paper, Kristin McLeod, Jurica Spren JB20789XX.

VIVID™ CLINICAL APPLICATIONS



VALVE AND CHAMBER QUANTIFICATION

Precision at the heart of quantification.



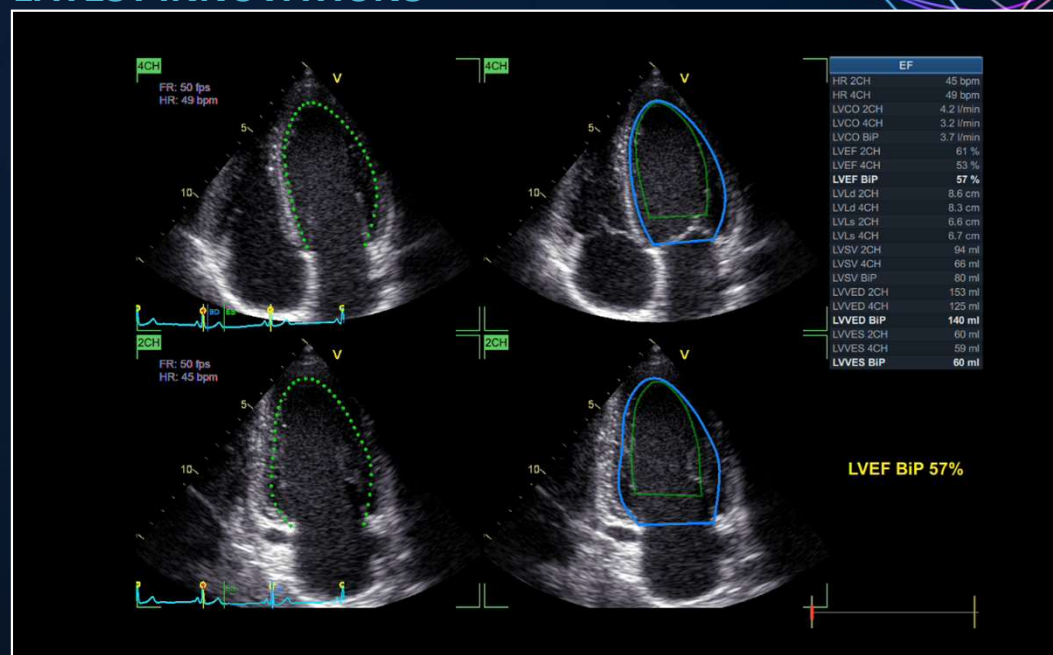
AI EASY AUTOEF

Our AI-based Auto ROI detection algorithm allows users to measure ejection fraction, with no manual interaction apart from initiating the tool and approving the results.⁷

7 - The Role of AI in Streamlining Echocardiography Quantification White Paper, Kristin McLeod, Jurica Sprem JB20789XX.

Vivid T9 Ultra Edition Customer Presentation

LATEST INNOVATIONS



EF results in just 1 click

AI AUTO MEASURE 2D

Semi-automated LV dimension measurements (2D calipers) in the parasternal long axis view, reducing manual interactions.

Benefits:

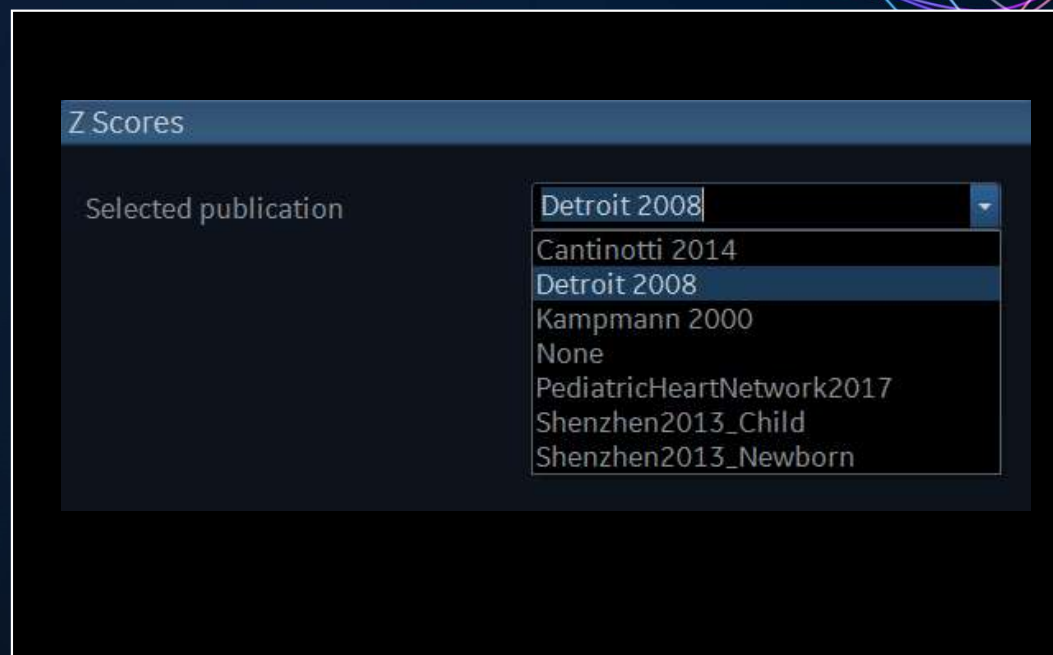
- Achieves fast measurements of left ventricle dimensions:
 - Up to 80% less clicks⁷
 - No need to scroll to look for ED and ES frames
 - Reduce manual workflow during analysis of cardiac images
- Improves reliability and repeatability of measurements – potentially increasing reproducibility for follow-up studies⁷

⁷ - The Role of AI in Streamlining Echocardiography Quantification White Paper, Kristin McLeod, Jurica Sprem JB20789XX.



Z-SCORES

Vivid T9 Ultra Edition Support for six sets of user selectable Z score publications covering the most common pediatric dimension measurements.



VIVID™ CLINICAL APPLICATIONS

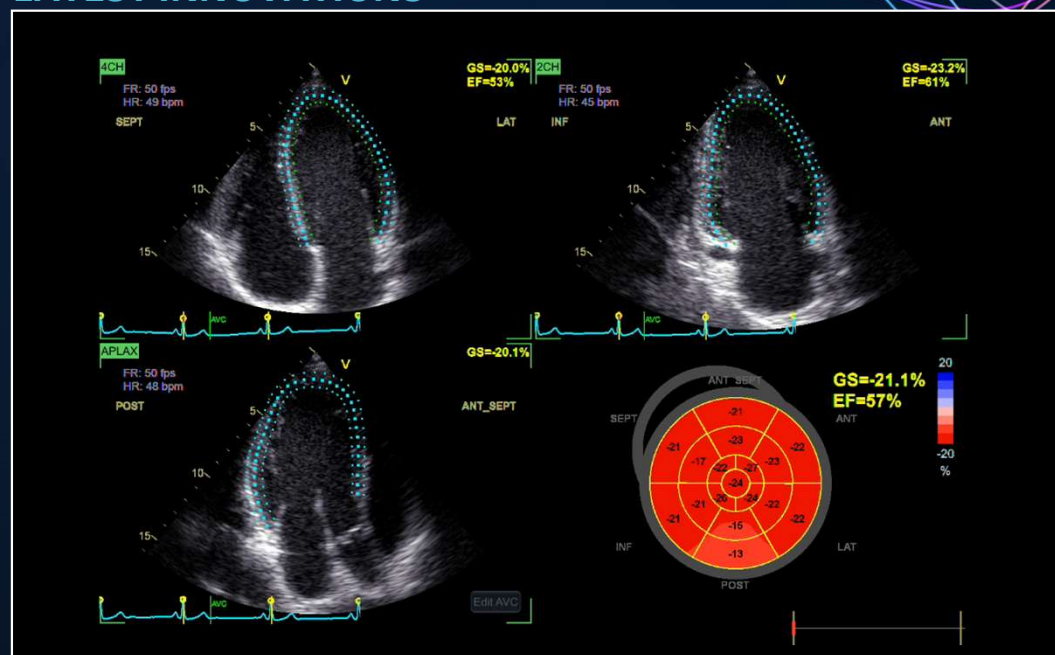


AFI FUNCTIONAL IMAGING

From diagnosis to prognosis.

**AI** EASY AFI LV

Our AI-based global and segmental strain measurements require no manual interaction apart from initiating the tool and approving the results. Additionally, you will be able to view EF measurements.⁷

LATEST INNOVATIONS

7 - The Role of AI in Streamlining Echocardiography Quantification White Paper, Kristin McLeod, Jurica Sprem JB20789XX.

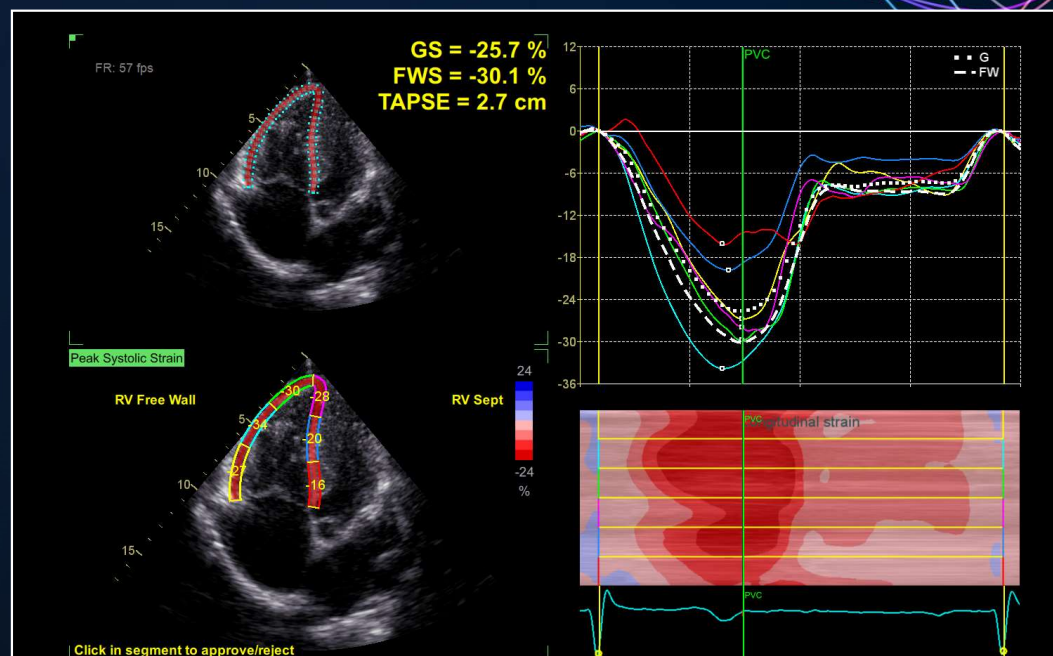
AFI RV

AFI RV is a tool to assess the right ventricular function by advanced speckle tracking echocardiography.

Benefits:

- Offers renown Vivid™ AFI user interface and workflow to allow current and new users easy adoption
- Supports right ventricle free wall strain, global strain and Tricuspid Annular Plane Systolic Excursion (TAPSE)
- Follows the 2018 EACVI-ASE Strain Standardized Task Force guidelines¹⁵
- Supports right ventricle images also from previous releases

15 - Standardization of left atrial, right ventricular, and right atrial deformation imaging using two-dimensional speckle tracking echocardiography: a consensus document of the EACVI/ASE/Industry Task Force to standardize deformation imaging. Badano et al. European Heart Journal – Cardiovascular Imaging (2018) 0, 1–10 doi:10.1093/ehjci/jeu042.



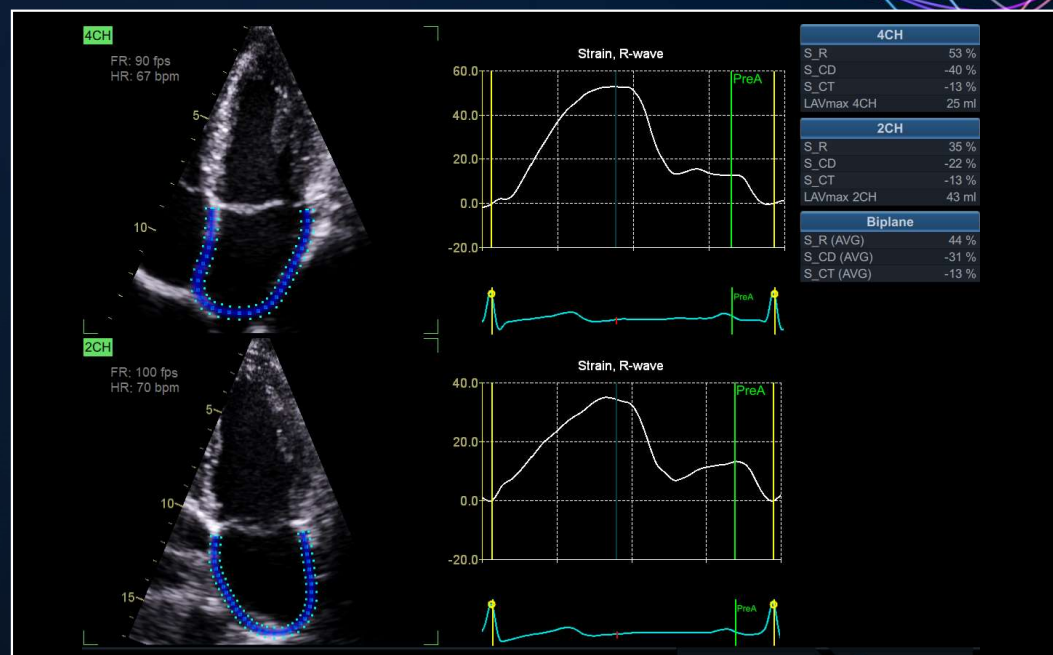
AFI LA

AFI LA Strain is a method to assess the left atrial function allowing global strain to be measured using speckle tracking echocardiography.

Benefits:

- Offers Vivid™ renown AFI user interface and workflow allowing users to easily adopt
- Supports left atrium strain, volumes and emptying fraction measurements
- Follows the 2018 EACVI-ASE Strain Standardized Task Force guidelines¹⁵
- Supports left atrium images also from previous releases

¹⁵ - Standardization of left atrial, right ventricular, and right atrial deformation imaging using two-dimensional speckle tracking echocardiography: a consensus document of the EACVI/ASE/Industry Task Force to standardize deformation imaging. Badano et al. European Heart Journal – Cardiovascular Imaging (2018) 0, 1–10 doi:10.1093/ehjci/jeu042.





© 2022 General Electric Company.

GE, the GE Monogram, Vivid, cSound, HDlive, EchoPAC, ViewPoint, Centricity, Edison, and iCenter are trademarks of General Electric Company. GE Healthcare, a division of General Electric Company.

DICOM is the registered trademark of the National Electrical Manufacturers Association for its standards publications relating to digital communications of medical information.

Windows is a registered trademark of Microsoft Corporation.

Ultra Edition is not a product name; it refers to the 2020 release of the Vivid portfolio.

Third party trademarks are the property of their respective owners.

JB21214XX